



Gilbanks.

Nº 1
ST MICHAEL'S



AVAILABLE NOW

**ELEVATE YOUR BUSINESS WITH PREMIUM FLEXIBLE
WORKSPACE AT NO. 1 ST MICHAEL'S**

MANCHESTER
M2 5WD

ULTRA-PRIME LOCATION

Gilbanks selects only the most prestigious and strategically located buildings to ensure maximum convenience for all.

Situated amidst a vibrant hub of retail outlets, leisure facilities, restaurants, cafes, and bars, our serviced offices at No. 1 St Michael’s offer a wealth of options right on the doorstep.

With close proximity to Manchester’s main transport links, our location offers seamless connectivity, making business interactions easier and more efficient.

 **2 MINUTES**
To shops and wider business districts

 **3 MINUTES**
Walk to St. Peters Square Metrolink

 **12 MINUTES**
Walk to Oxford Road Station

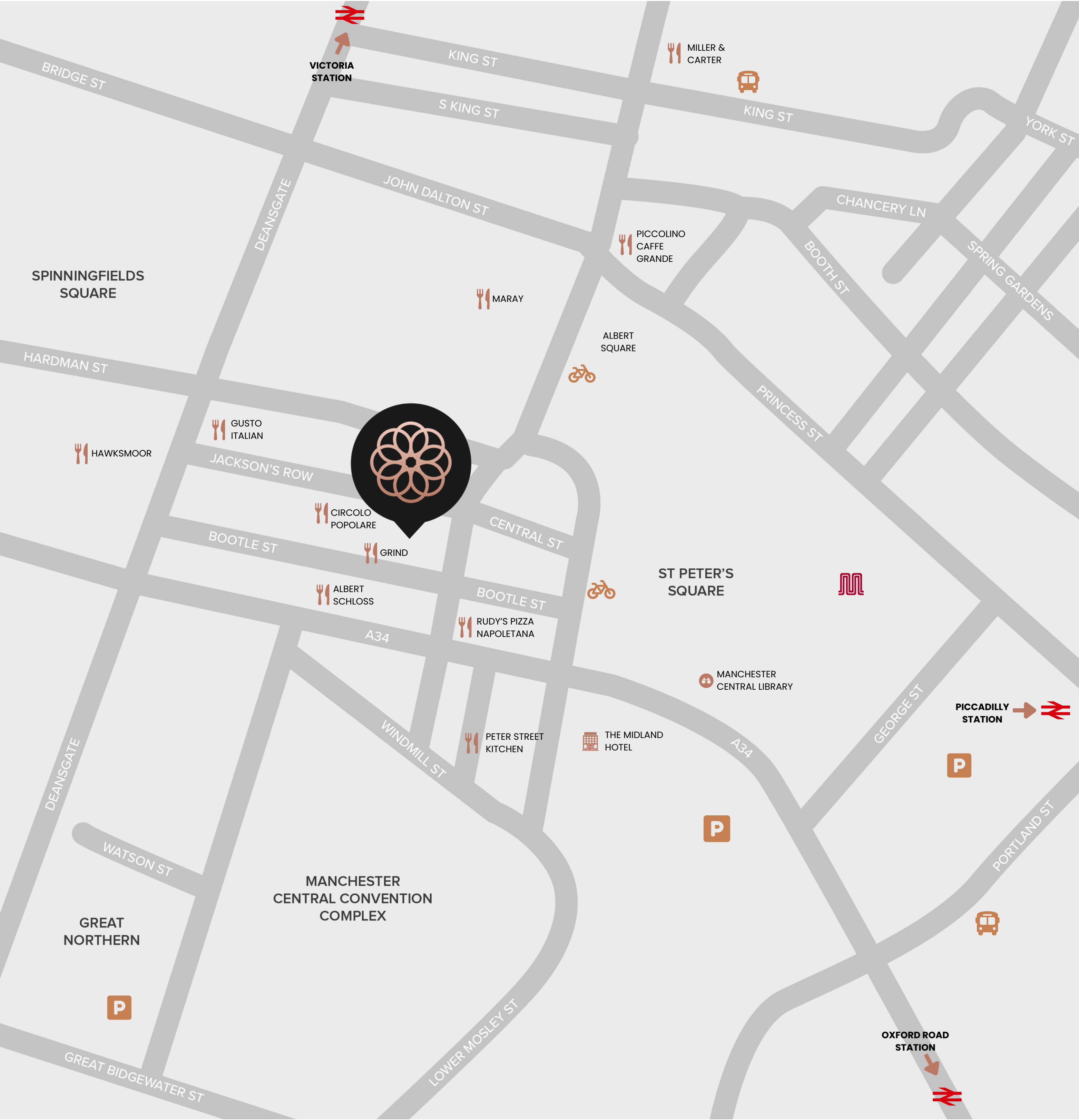




IMAGE RIGHTS BELONG TO RELENTLESS GROUP AND ST MICHAEL'S.

Meticulously designed, progressive workspaces built on prioritising people and the planet, as much as productivity.



SUSTAINABILITY

Targeting NABERS 5*, BREEAM outstanding and EPC A ratings. The building will be 60% more energy efficient than typical offices.



WELLBEING

Targeting WELL Platinum enabled, with exceptional end-of-journey facilities encouraging active commutes.



QUALITY

World-class rooftop restaurant, high-performing glazed façade and high-quality communal space fit out.



TECHNOLOGY

Targeting Wiredscore Platinum, access through QR code/APP, Cyber security and SMART technology.



EXPERIENCE

Unrivalled customer service, communal meeting rooms and business lounge, cycle storage and hire, and Amazon Lockers.


THE DESTINATION FOR BUSINESS

The building is home to a vibrant community of established businesses, alongside renowned names in food and beverage - including a world-class rooftop restaurant.

On the ground and lower levels, tenants also have access to the Club House: a multifunctional space featuring bookable event and meeting areas, coworking zones, secure cycle storage, and hotel-grade shower changing facilities.

HILL DICKINSON

FLOOR 9



Pinsent Masons


FLOORS 7 & 8

S&P Global

FLOOR 6

arm

FLOORS 3 - 5

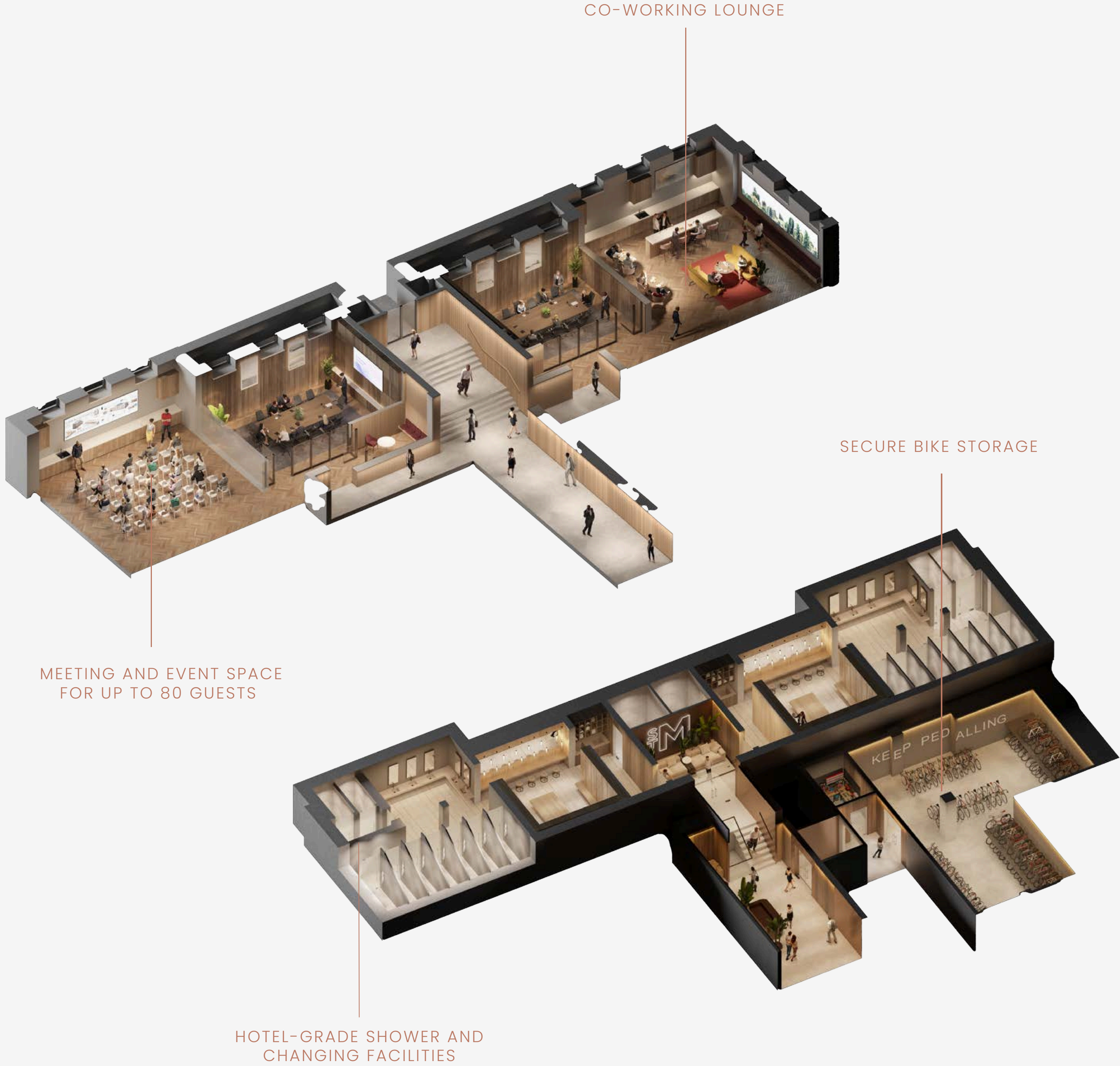


Gilbanks.

FLOORS 1 & 2



IMAGE RIGHTS BELONG TO GRIND, CIRCOLO POPOLARE, AND CHOTTO MATTE RESPECTIVELY.



CLUB HOUSE. ILLUSTRATIVE PURPOSES ONLY.
IMAGE RIGHTS BELONG TO RELENTLESS GROUP AND ST MICHAEL'S.



GILBANKS AT NO.1 ST MICHAEL'S

**2 - 100 DESK OFFICE SUITES
AVAILABLE NOW**



PRIVATE SERVICED OFFICES BY GILBANKS

Premium, contemporary and flexible workspace solutions tailored for professional services and professional creative businesses.

Meticulously designed to foster productivity and bolster success, with a class-leading hospitality service, state-of-the-art facilities and a steadfast commitment to workplace wellbeing. We firmly believe that businesses and teams thrive when provided with the tools to focus on what they do best.



UNRIVALLED CUSTOMER SERVICE

Proactive, dedicated service is our most distinguishing benefit and our staff are trained to focus on the needs of our professional clientele. 100% CSAT score in 2024.



WORLD-CLASS CONNECTIVITY

All suites are provided with an uncontended, highly secure internet connection with backup line which can be configured to suit your precise infrastructure.



MEETING ROOMS

Three thoughtfully designed meeting rooms, built to inspire focus and collaboration. Each space features advanced video conferencing technology for effortless connectivity - with members receiving 25% off all bookings.



ACOUSTIC COMFORT

Our offices are insulated with commercial-grade acoustic panelling, ideal for your comfort and privacy wherever you are.



ERGONOMIC FURNITURE

All suites benefit from the highest quality ergonomic furniture including sit/stand desks throughout, as well as Humanscale task chairs.



COMPLIMENTARY REFRESHMENTS

Only the finest and ethically sourced coffee from Nespresso and Pact are offered throughout our offices. Traditional and herbal teas are also available.

BE PART OF THE GILBANKS COMMUNITY ALONGSIDE
OUR VALUED NETWORK OF CLIENTS



INCLUDED IN PRICE

10 Gbps fibre internet with 1 Gbps satellite backup
Building utilities including heating, water and electricity
Service charges
Business rates
Building, public liability and products liability insurance
Office set-up costs
Workstations complete with 1400mm wide desks and ergonomic Humanscale task chairs
Reception service
Mail handling
Cleaning
Unlimited refreshments

EXTRA COSTS

Contents insurance
Meeting room bookings (Gilbanks residents receive a 25% discount)
Printing and scanning
Franking and postage
Outgoing phone calls



For further information and current availability, please contact:

enquiries@gilbanks.com

0161 566 3730

NO.1 ST MICHAEL'S,
36 JACKSON'S ROW,
MANCHESTER,
M2 5WD.

GILBANKS.com

