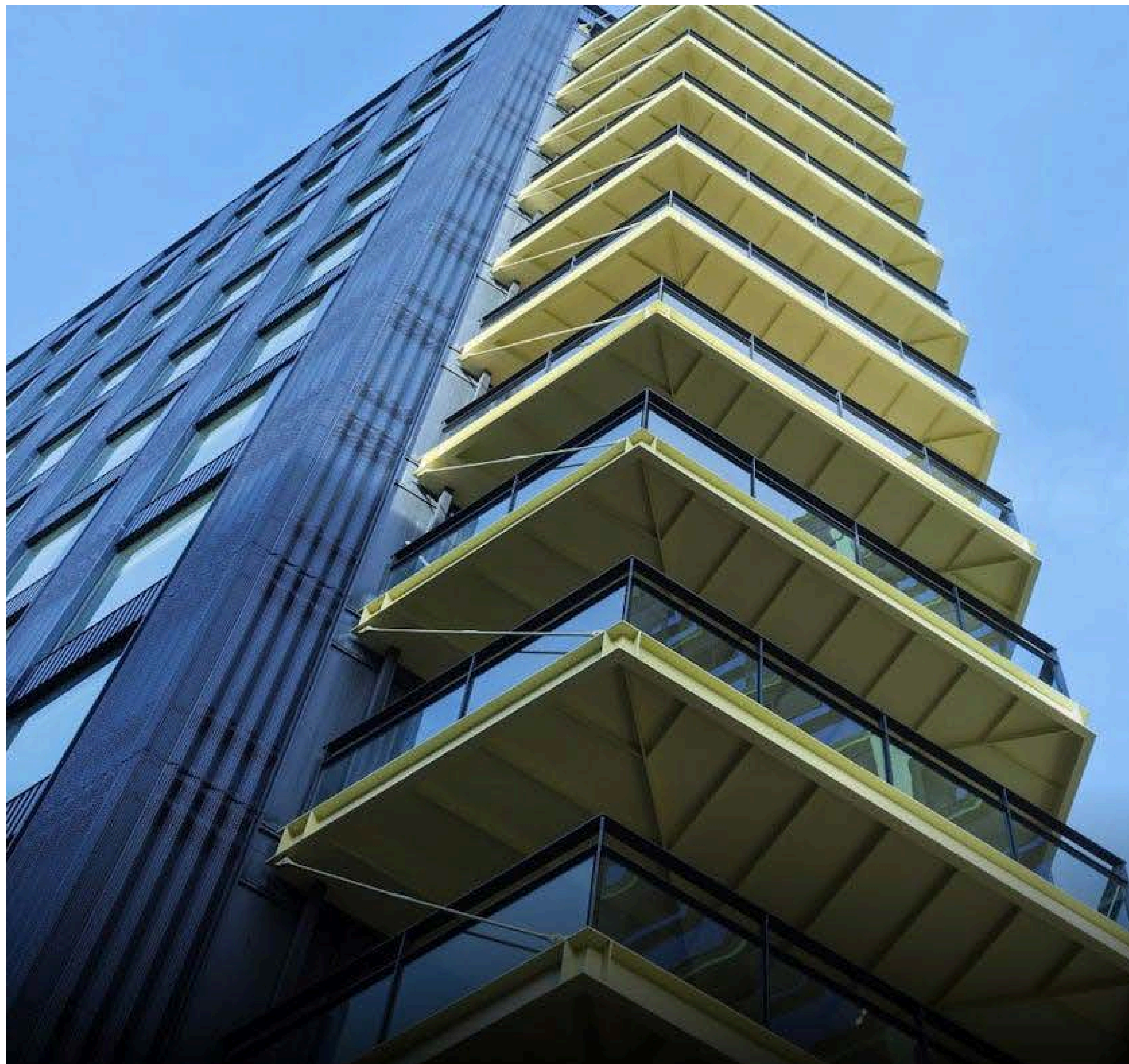




Gilbanks.



ASSEMBLY
BRISTOL



WELCOME TO ASSEMBLY C

Gilbanks at Assembly C in Bristol offers a meticulously designed workspace that enhances team productivity and supports long-term business success.

Part of an ultra-prime, city-centre waterside development, Assembly C is connected by a biodiverse landscaped park and enriched by a public art trail by renowned artist Alex Chinneck.

The building has outstanding sustainability credentials, including WELL Enabled design, BREEAM Excellent certification, an EPC A rating, and a commitment to Net Zero in operation.

The top floor features a rooftop Club Room and terrace, while the lower levels provide premium end-of-journey facilities with cycle storage, showers, and changing rooms.

A dedicated Community Manager and curated events programme complete the experience - creating an inspiring and efficient workspace.

UNRIVALED LOCATION FOR YOUR CONVENIENCE

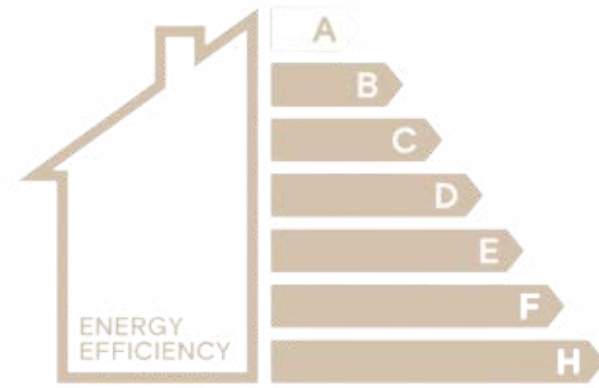
Assembly's central location makes commuting effortless, with Temple Meads Station just a five-minute walk away and extensive bus, Metrobus, and citywide cycling networks ensuring seamless travel for every journey.

5 MINUTES
Bristol Temple Meads Station

10 MINUTES
to Cabot Circus

Set beside the Floating Harbour and Temple Way, Assembly is also moments from Cabot Circus and a vibrant mix of cafés, restaurants, shops, cultural attractions, and green spaces - putting everything your team needs right on the doorstep.





A ENERGY EFFICIENCY RATING



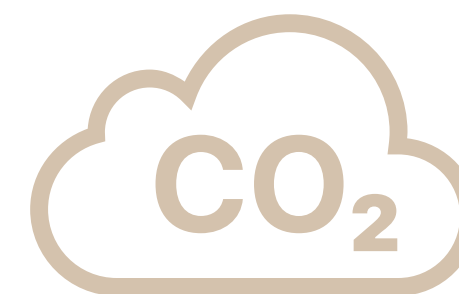
MEETS BEST PRACTICE FOR RIBA 2030
CLIMATE CHALLENGE TARGETS



UPFRONT EMBODIED CARBON PREDICTED TO BE
NEARLY 10% LOWER THAN LETI 'BEST PRACTICE'

BREEAM
EXCELLENT

BREEAM EXCELLENT ACCREDITATION



TARGETING NET ZERO IN OPERATION



SMARTSCORE CERTIFIED

DESIGNED FOR WELLBEING WITH EXCEPTIONAL AMENITIES

Assembly C offers a range of thoughtfully designed amenities to support work, wellbeing, and community.

Every detail has been considered to create a premium, flexible environment that enhances the experience for all building tenants.



The Clubroom

A versatile top-floor breakout space with a bespoke teapoint, ideal for events, collaboration, or informal gatherings, opening onto a 5,000 sq ft roof terrace with panoramic city views.



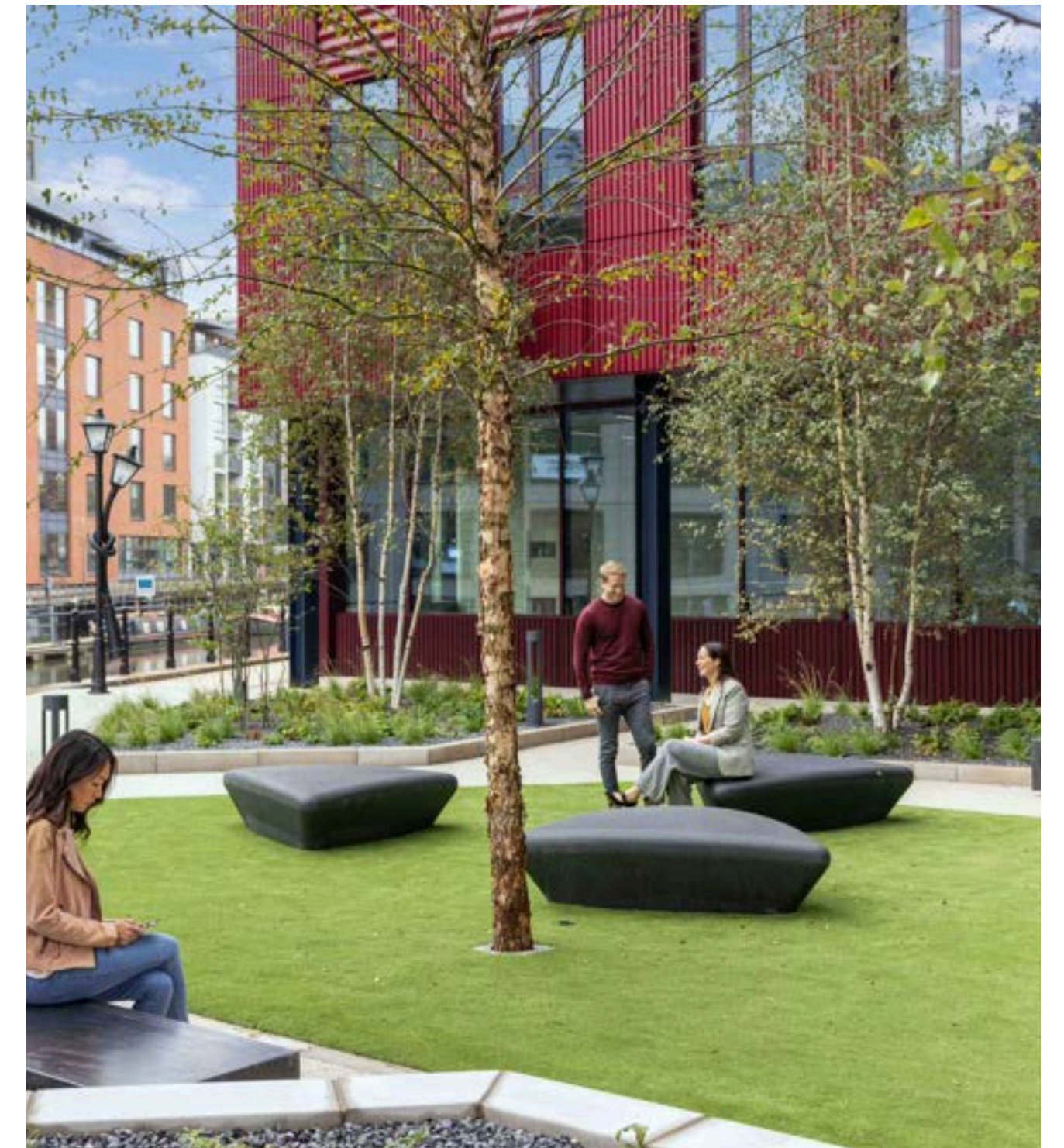
Public spaces

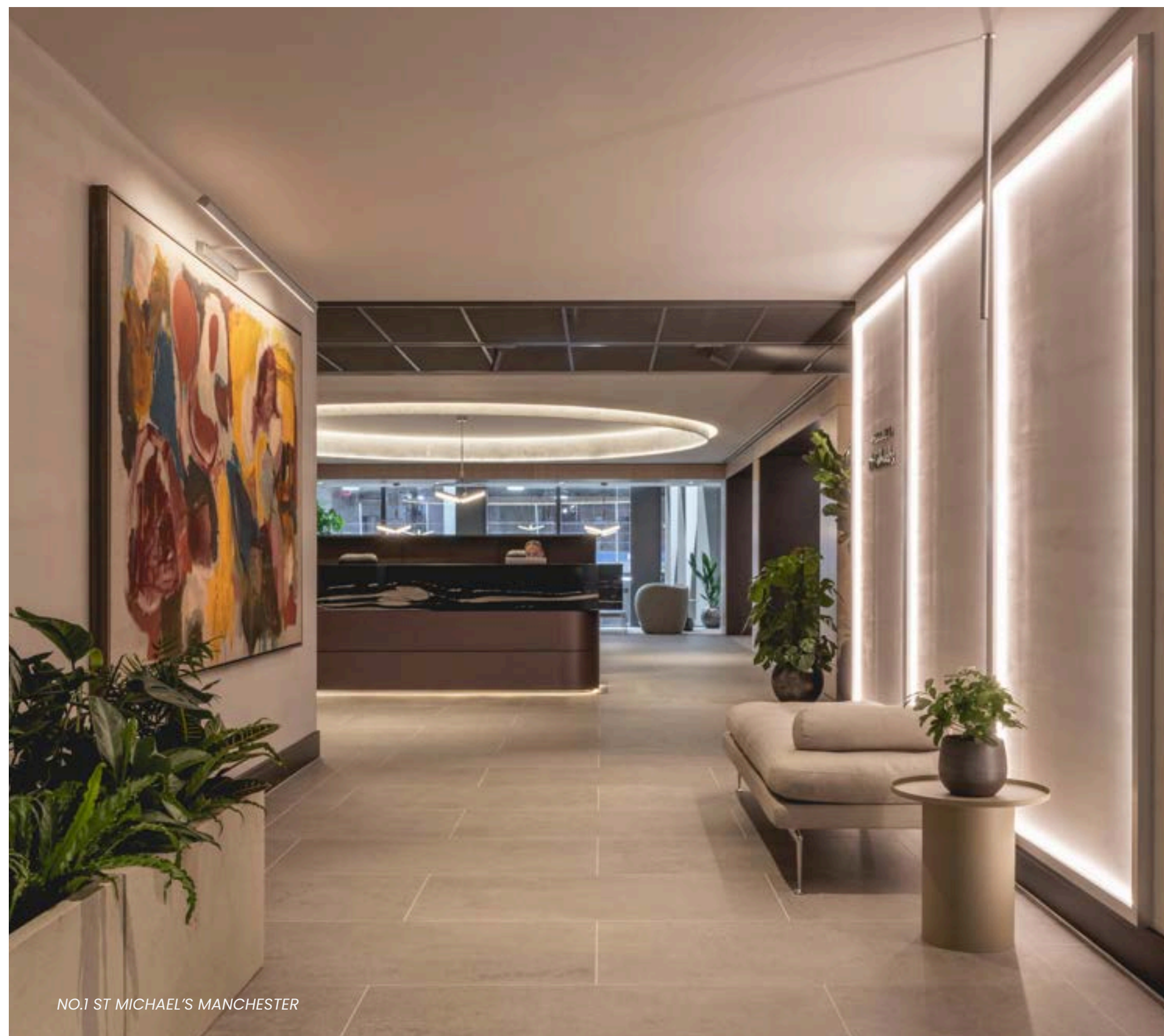
Landscaped parks and vibrant shared areas, including a restaurant in neighbouring Building A.



Cycling facilities

Secure storage, Brompton bike lockers, electric bike charging, maintenance stations, showers, and lockers.





NO.1 ST MICHAEL'S MANCHESTER

PRIVATE SERVICED OFFICES BY GILBANKS

Gilbanks offers premium, contemporary, and flexible workspace solutions tailored specifically for professional services and professional creative businesses. Every office is meticulously designed to foster productivity and support your success, blending state-of-the-art facilities with a steadfast commitment to workplace well-being.

With class-leading hospitality at the core of our service, we take care of every detail, allowing you and your team to focus on what you do best. At Gilbanks, we believe that businesses thrive when provided with the right environment, tools, and support to achieve their goals.



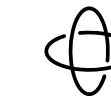
FIVE ST PHILIPS BIRMINGHAM



11 YORK STREET MANCHESTER



FIVE ST PHILIPS, BIRMINGHAM



UNRIVALLED CUSTOMER SERVICE

Proactive, dedicated service is our most distinguishing benefit and our team are trained to focus on the needs of our professional clientele. 100% Customer Satisfaction score achieved across sites in 2024.



WORLD-CLASS CONNECTIVITY

All suites are provided with an uncontended, highly secure internet connection with backup line which can be configured to suit your precise infrastructure.



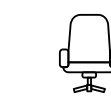
MEETING SPACES

Executive boardrooms, meeting rooms and presentation rooms feature large HD screens and video-conferencing facilities. A top-floor event space is also available.



ACOUSTIC COMFORT

Acoustic barriers are installed throughout our workspaces, ideal for your comfort wherever you are.



ERGONOMIC FURNITURE

All suites benefit from the highest quality ergonomic furniture including sit/stand desks throughout, as well as Humanscale task chairs.



COMPLIMENTARY REFRESHMENTS

Only the finest and ethically sourced coffee from Pact and Nespresso is offered throughout our offices. Traditional and herbal teas are also available.

WORK ALONGSIDE A PROFESSIONAL COMMUNITY



Cavendish



Hill Dickinson



INCLUDED IN PRICE

10 Gbps fibre internet with 1 Gbps satellite backup

Building utilities including heating, water and electricity

Service charges

Business rates

Building, public liability and products liability insurance

Office set-up costs

Workstations complete with 1400mm wide sit/stand desks and ergonomic HumanScale task chairs

Reception service

Mail handling

Cleaning

Unlimited refreshments

EXTRA COSTS

Contents insurance

Meeting room bookings (Gilbanks residents receive a 25% discount)

Printing and scanning

Franking and postage

Outgoing phone calls



Gilbanks.

For more information and availability please contact:

enquiries@gilbanks.com

GILBANKS.com

